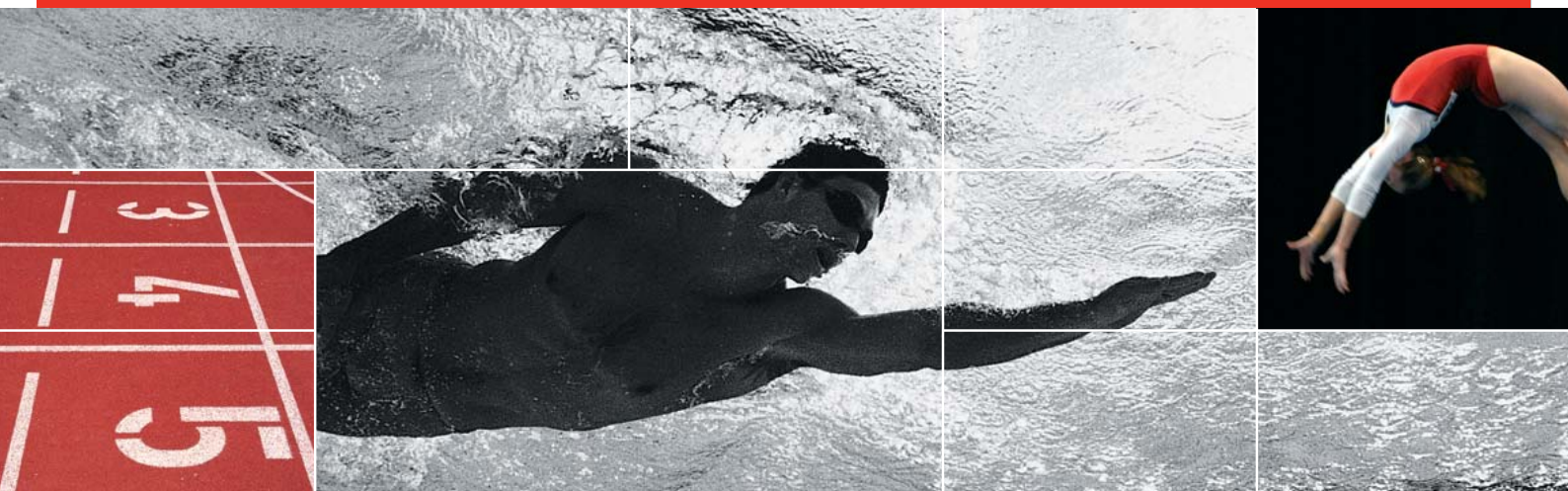




Australian Government
Australian Sports Commission



AUSTRALIAN
INSTITUTE OF SPORT



STUDENTS YEARS 7–10: INFORMATION ABOUT AIS EDUCATION PARTNERS

ACT secondary school system

The AIS has special resource arrangements with both Canberra High School and University of Canberra Senior Secondary College, Lake Ginninderra (UC SSC Lake Ginninderra), including AIS liaison teachers. These are both ACT Government schools. The sports program covers the voluntary school contribution, with families covering any additional costs.

Canberra High School (Years 7–10)

- > Canberra High School is about ten minutes from the AIS. The school has had a long and successful association with the AIS.
- > Athletes enrol in the school's Elite Sporting Program which aims to help them achieve their academic and sporting potential.
- > AIS athletes are given one free line which is supervised by the AIS liaison teacher and is used for private study, pastoral care sessions or academic support.
- > Students are expected to attend their classes, wear the school uniform and follow the school rules.
- > Athletes are expected to behave to the standard of an AIS scholarship holder (as covered in the athletes' code of conduct).
- > More information can be found in 'Questions and answers' and at www.canberraahs.act.edu.au

Start getting organised early

You will need to organise your studies before you arrive at the AIS, so it is important to contact ACE as soon as possible. More information about options can be found in 'Questions and answers'.

Note: The AIS does not offer education partnerships with any other ACT secondary schools, government or non-government. If you wish to consider any other secondary schooling options, this will first need to be discussed with your coach and the ACE manager.

QUESTIONS AND ANSWERS

For all school students up to Year 12

When can interstate students join the ACT school system?

In general, the ACT school system enables students to come from interstate at any stage of school year. In the case of years 10 or 12 however, it is preferable that you start at the beginning of the school year to ensure you meet ACT Board of Secondary School Students requirements.

How is the ACT school system different to other states?

In the ACT public school system, students attend a high school for Years 7 to 10 and then a senior secondary college for Years 11 and 12.

How do athletes get to school?

A shuttle bus service transports AIS athletes to and from Canberra High School and UC SSC Lake Ginninderra.

What do AIS liaison teachers do?

AIS liaison teachers are provided through a partnership between the school and AIS. It is a good idea to arrange a meeting with the school's AIS liaison teacher for your first day. They are your contact for all school-related issues or questions. They are also there to assist parents and students to establish their own direct relationship and line of communication with the school.

How do ACE advisers help?

ACE liaises with your school's AIS liaison teacher about anticipated absences due to AIS sporting commitments. You can also talk to ACE and your coach about any changes or concerns with your study program, so that the appropriate assistance can be provided.

What is the AIS Study Hall program?

The AIS Study Hall program provides extra academic support to help you balance schooling and sporting commitments and achieve your academic potential. The Study Hall program is compulsory for school-age athletes and is located on the AIS campus.

Study Hall tutors provide one-on-one support to help you manage and organise your studies, as well as specialist subject support. For example, Study Hall tutors can help you successfully manage your time by identifying assessment dates and sporting commitment clashes, and planning your study to meet both. This means athletes who are enrolled in formal education have another 'point of call' for their studies, in addition to their teachers, AIS liaison teachers and ACE.

Study Hall is a quiet, comfortable working environment which runs from 7.30pm to 9.30pm, Monday to Thursday, during the Canberra school terms. The number of sessions you need to attend depends on your type of study, number of subjects and sport expectations. As a guide, Years 7–10 attend two sessions a week (four hours) while Years 11–12 attend two to four sessions a week depending on study load and level.

All athletes are encouraged to dedicate additional study time outside of these scheduled sessions to remain on top of their course work.

Study Hall provides term and semester reports to parents, coaches and houseparents, which provide feedback on each athlete's study progress and application within Study Hall.

Good communication and organisational skills are essential throughout your career and life, and Study Hall maximises the opportunity to develop these fundamental skills that will support your progress within elite sport and in your non-sporting career aspirations.

For parents

What can parents do?

Family involvement and strong family/school/community partnerships make a positive difference to a student's academic success. Parents can stay involved with their child's education by:

- > attending information sessions
- > requesting and attending parent/teacher interviews. Interviews can also take place by phone or Skype
- > communicating regularly with the AIS liaison teacher in relation to your child's progress
- > talking with your child about the work they are doing, asking about when assignments are due and asking to see drafts
- > reading regular school newsletters/updates
- > communicating directly with the AIS liaison teachers about any issues and, if not satisfied, seeing the principal
- > encouraging your child to make the most of the support available — at school and at the AIS
- > reminding your child that results and effort are related and they need to work hard in both school and sport.

NEXT STEPS

Contacts

If you have accepted a scholarship at the AIS, contact the AIS ACE program on (02) 6214 1265.

Enrolment documents — Canberra High School

- > Complete and return the ACT Department of Education enrolment form (including a copy of athlete's birth certificate) to ACE.
- > Send the previous year's school reports to ACE to help make the transition between state education systems as smooth as possible.
- > Call the school and let them know when the athlete is planning to start. It is a good idea to arrange a meeting with the principal and AIS liaison teacher.

AIS ACE contact details

Manager: (02) 6214 1745

Coordinator: (02) 6214 1265

Adviser: (02) 6214 1393

Adviser: (02) 6214 7334

Email: aisace@ausport.gov.au